

FICHA TÉCNICA

DATA SHEET



CORTINA ILUCS 4 CAPAS

Descripción:

Cortina fonoabsorbente de 4 capas blackout de tejido ILUCS, 100% poliéster Trevira CS ignífugo, con PX210. Proporciona absorción acústica del 100%, 9 dB de insonorización, mejora en un 30% el aislamiento térmico de una ventana doble climalit y elimina la radiación solar con su núcleo de fibra de carbono.

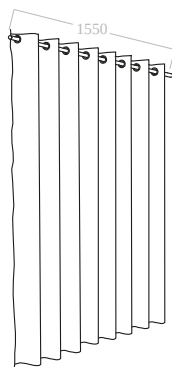
Características

Composición: Tejido fonoabsorbente ILUCS

- Espesor: 8mm
- Absorción acústica: α_w 1 / 100% - NRC 1
- Insonorización: 9dB
- Resistencia a fuego: B-S1-D0
- Garantía: 10 años

A medida:

- Ancho 165cm
- Alto a medida
- Siempre en metros lineares enteros.



ILUCS 4-LAYERS CURTAIN

Description:

Sound-absorbing curtain of 4 blackout layers, made from ILUCS, 100% polyester Trevira CS fire-resistant, and PX210. It offers 100% of sound absorption and provides up to 9 dB of acoustic insulation. It also improves the thermal insulation of a double-glazed window by 30%, and blocks solar radiation thanks to its carbon fibre core.

Characteristics

Composition: Sound-absorbing ILUCS fabric

- Thickness: 8mm
- Acoustic absorption: α_w 1 / 100% - NRC 1
- Acoustic insulation: 9dB
- Fire resistance: B-S1-D0
- Guarantee: 10 years

Custom-made:

- Width 165cm
- Height: made to measure
- Always supplied in whole linear meters



Instalación:

- Colgado: con raíles o arandelas para barra

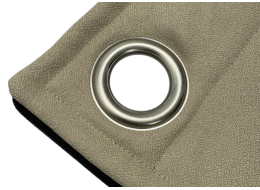
Installation:

- Hanging system: available with rails or eyelets for a hanging bar.

Detalles



Raíles
Rails



Arandelas
Eyelets



Details:

4 layers / 4 capas



Limpieza:

Véase manual del distribuidor: página 205

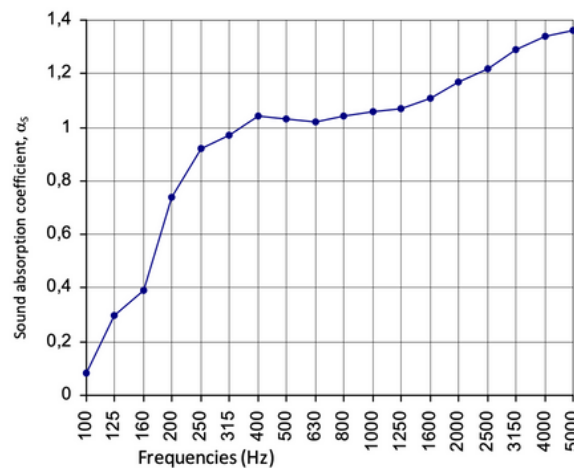
Cleaning:

See the dealer's manual: page 204

Absorción

Absorption:

f (Hz)	T ₁	T ₂	α _s	α _p
100	8.49	6.98	0.08	0.25
125	8.45	4.66	0.30	
160	8.83	4.19	0.39	
200	9.17	2.90	0.74	0.90
250	9.10	2.48	0.92	
315	8.55	2.33	0.97	
400	8.61	2.23	1.04	1.00
500	8.77	2.25	1.03	
630	8.49	2.24	1.02	
800	8.00	2.18	1.04	1.00
1000	7.52	2.11	1.06	
1250	6.87	2.04	1.07	
1600	6.15	1.93	1.11	1.00
2000	5.26	1.78	1.17	
2500	4.38	1.63	1.22	
3150	3.46	1.44	1.29	1.00
4000	2.72	1.28	1.34	
5000	2.04	1.11	1.36	



Ensayado por Tested by

tecnalia Inspiring Business

N° test: B2019-54-M615

Evaluation according to EN ISO 11654:1997	
Weighted sound absorption coefficient: α _w = 1,00	Classification: A
Evaluation based on laboratory measurement obtained by an engineering method.	



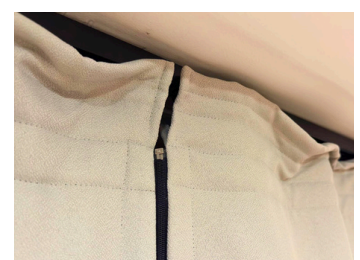
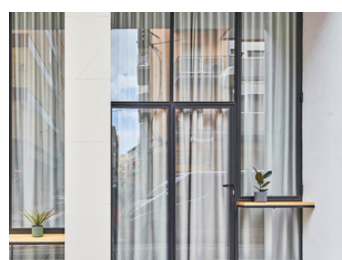
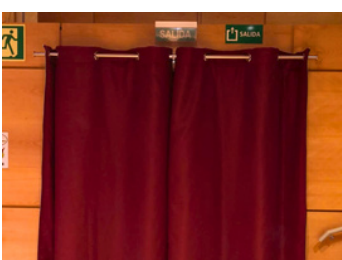
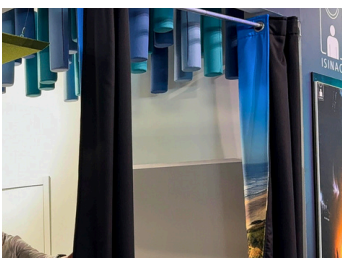
STANDARD 100



ISO 14001
BUREAU VERITAS
Certification



ISO 14006
BUREAU VERITAS
Certification



Tejidos

Fabrics:

ILUCS



+34 664 286 208
info@isinac.com

AVISO LEGAL: La utilización, copia o divulgación por cualquier medio del presente documento, sin autorización del remitente, está prohibida y podrá dar lugar al ejercicio de las acciones legales oportunas. ISINAC ACOUSTIC WORLD SLU - ESB27853381 - AVDA. RAMON NIETO 125, 36205 - VIGO (ESPAÑA)

LEGAL NOTICE: The use, reproduction, or disclosure of this document by any means, without the sender's authorization, is prohibited and may result in the exercise of appropriate legal actions. ISINAC ACOUSTIC WORLD SLU - ESB27853381 - AVDA. RAMON NIETO 125, 36205 - VIGO (SPAIN)